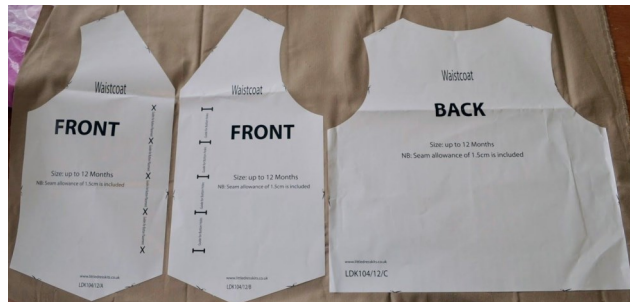
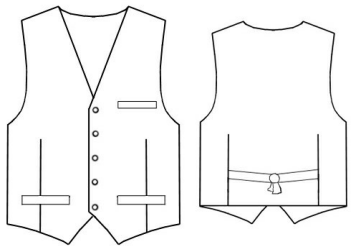


## Textiles - Waistcoats

<b>Annotate</b>	To add notes which explain a plan or design.
<b>Fabric</b>	A natural or man-made woven or knitted material that is made from plant fibres, animal fur or synthetic material.
<b>Fastening</b>	A closing and opening detail on clothing such as buttons, zips and press-studs.
<b>Running-stitch</b>	A simple style of sewing in a straight line with no overlapping.
<b>Target customer</b>	A particular type of person who the product is aimed at.
<b>Template</b>	A stencil made of metal, plastic, or paper, used for making many copies of a shape or to help cut material accurately. (e.g. biscuit cutter)
<b>Waistcoat</b>	A formal vest-type jacket with no arms, usually worn over a shirt and under a jacket. They sometimes have buttons or pocket detailing.
<b>Waterproof</b>	Material that does not allow water to pass through it.



### Did you know?

The first waistcoat was created in Britain in 1630 by King Charles II.



Be careful when sewing your material together. Watch your fingers and ask an adult if you're unsure.

## Key facts



Think carefully about your target audience or customer.  
What do they like (colour, texture)?  
What material would be best?  
What type of fastening will you use?



It is very important that you are accurate in your measurements for the waistcoat, otherwise it will not fit the person it is designed for.